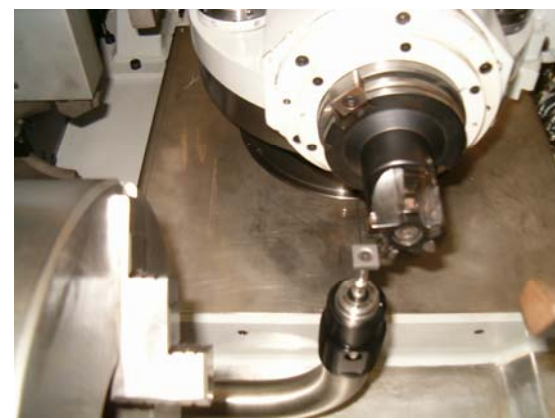


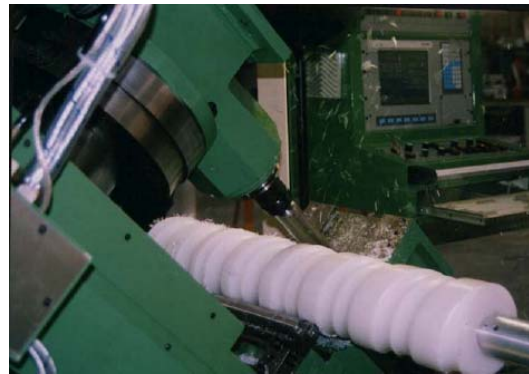
The machine can be optionally equipped by Renishaw tool probe and tool changer



CNC THREADER MACHINES
SAPORITI PLUS 400
with up to mm 8400 inclined bed

These threader machines are suitable for the manufacturing of plasticizing screws and twin screws cylindrical or tapered.

Any type of screws, twin screws or screws for convey can be made.



The machines are supplied with an accuracy certificate. Saporiti have design and manufactured machine tools with passion since 1946. Our machines are manufactured in Italy with first class materials, components and workers. Our products are continuously up dated and improved to keep our machines at the top level in quality, features, accuracy and performances. We have satisfied end users all around the world.



SAPORITI srl

Via dei Patrioti, 58 Solbiate Olona, 21058 (VA) ITALY

Tel -39 0331649196 fax -39 0331643136

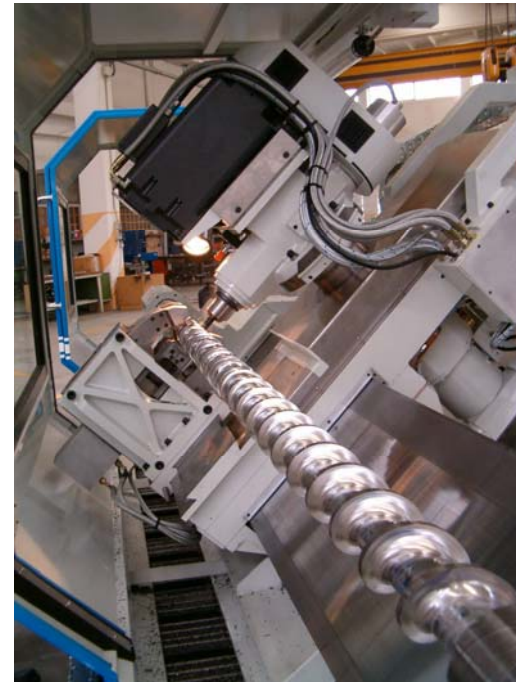
e-mail: saporiti@saporiti.it www.saporiti.it



WWW.SAPORITI.IT



The screws can have diameters from 35 mm up to 240 mm and machining length up to mm 6400.
The machines have hydraulic self centring rest with tungsten carbide pads.



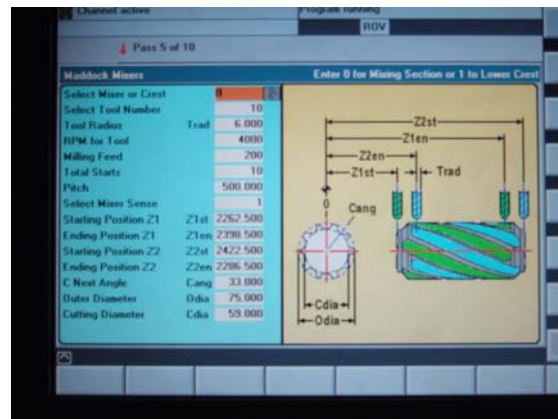
The machine is closed by six safety doors with big glass surface for the better view and the easier chip fall in the frontal chip conveyor.



The machines are equipped with CNC, motors and drivers Siemens.
The milling head motor power is 22 Kw. The spindle nose is ISO 50.
Max spindle speed 5000 rpm.

The bed is in electrowelded steel structure stress relieved with grinding surfaces to hold high precision guideways for rollers sliders.

Saporiti has developed software "SAPOVITE" to aid in screw programming.



WWW.SAPORITI.IT